

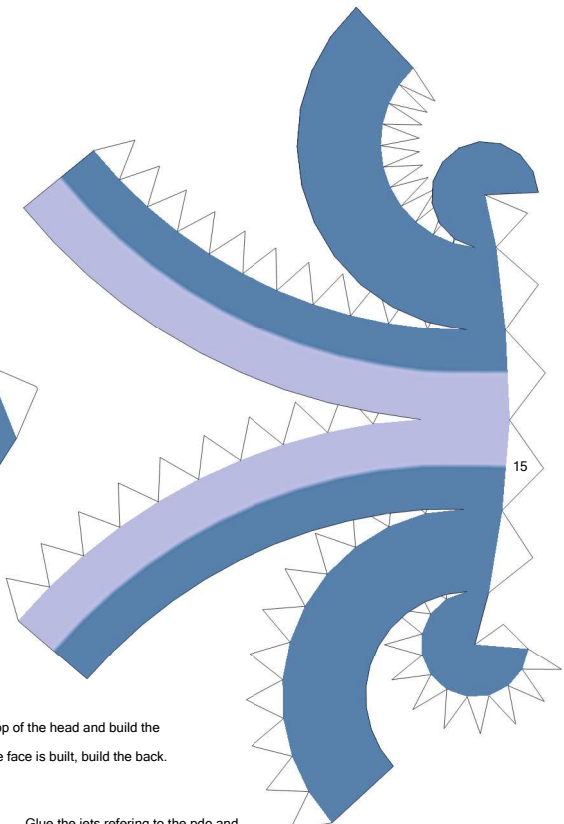
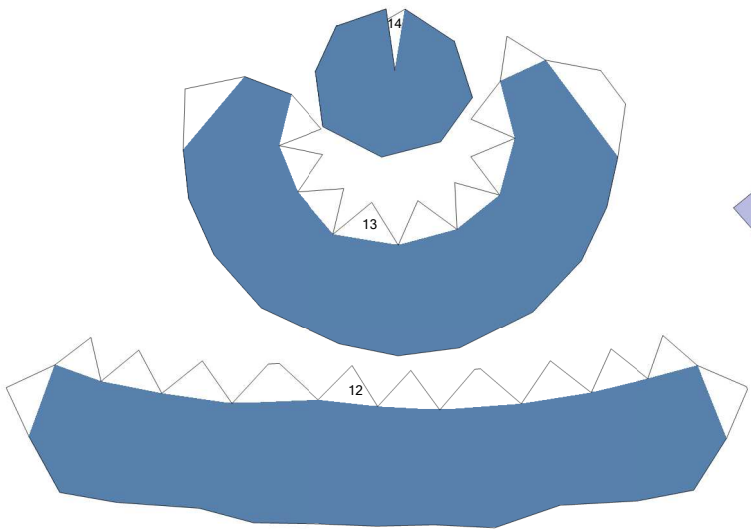


# Gabite

By Brandon

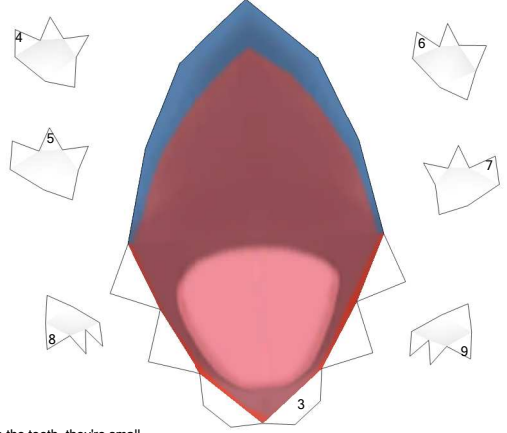
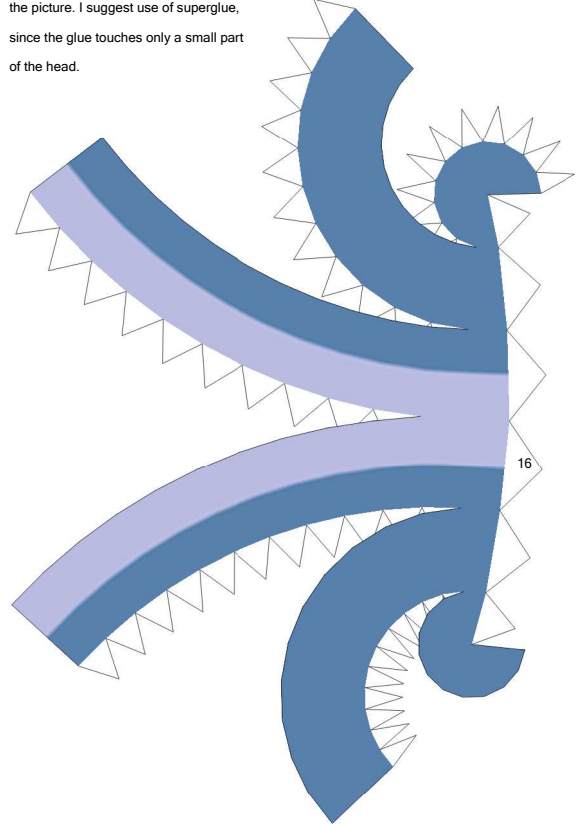
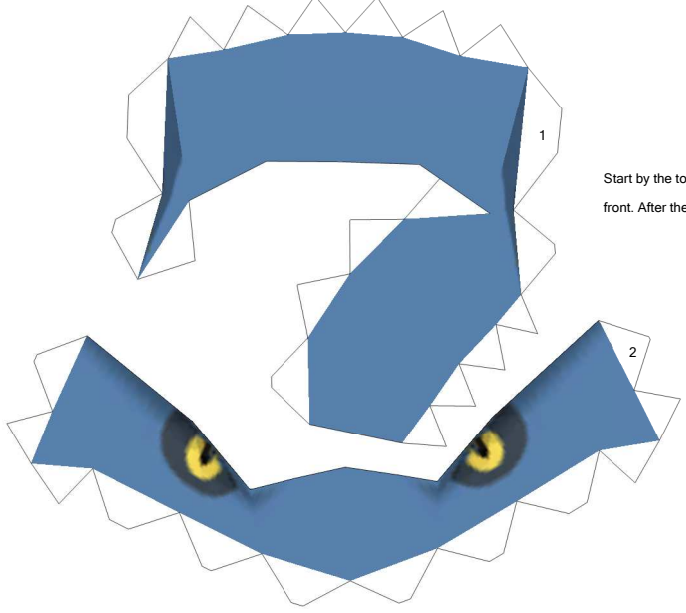
Build by LuIS

**Paper Pokés**  
*www.pokemonpapercraft.net*

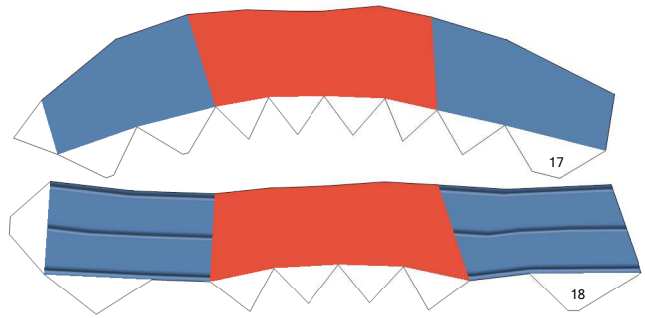
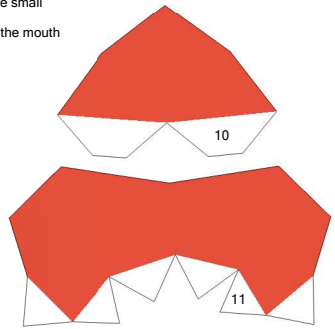


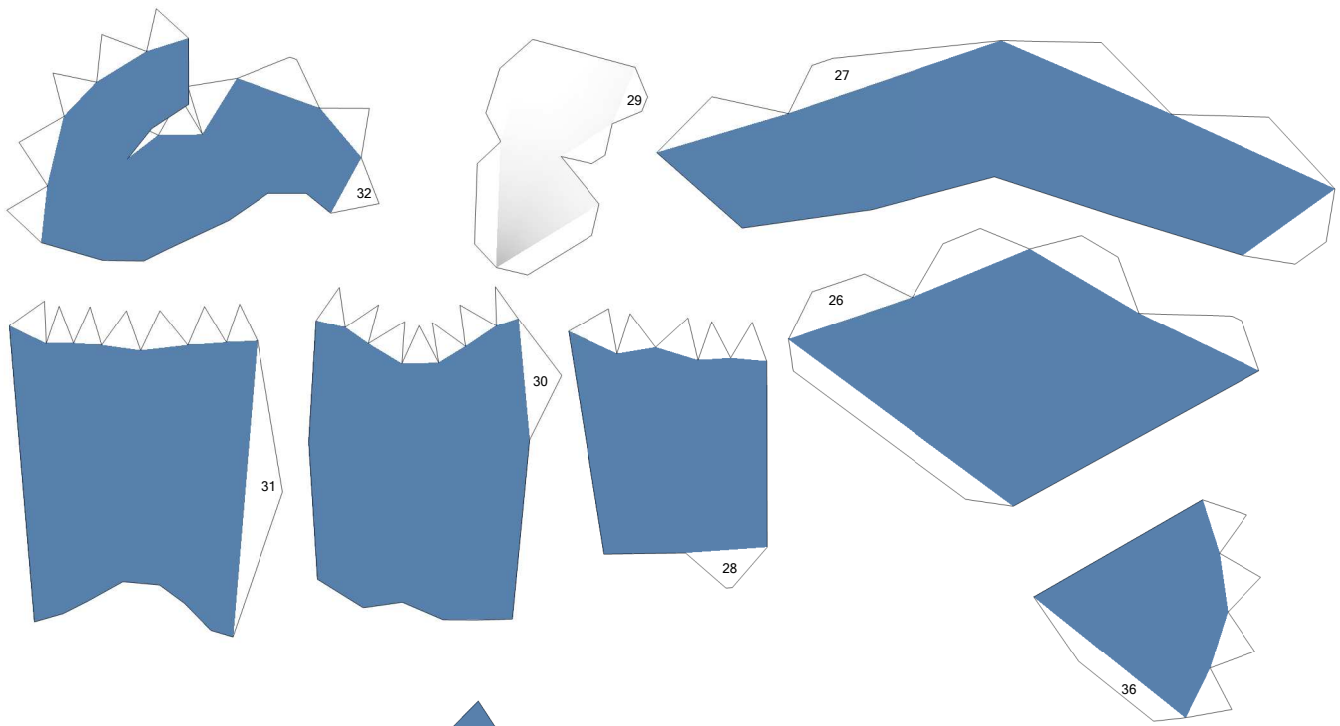
Start by the top of the head and build the front. After the face is built, build the back.

Glue the jets referring to the pdo and the picture. I suggest use of superglue, since the glue touches only a small part of the head.

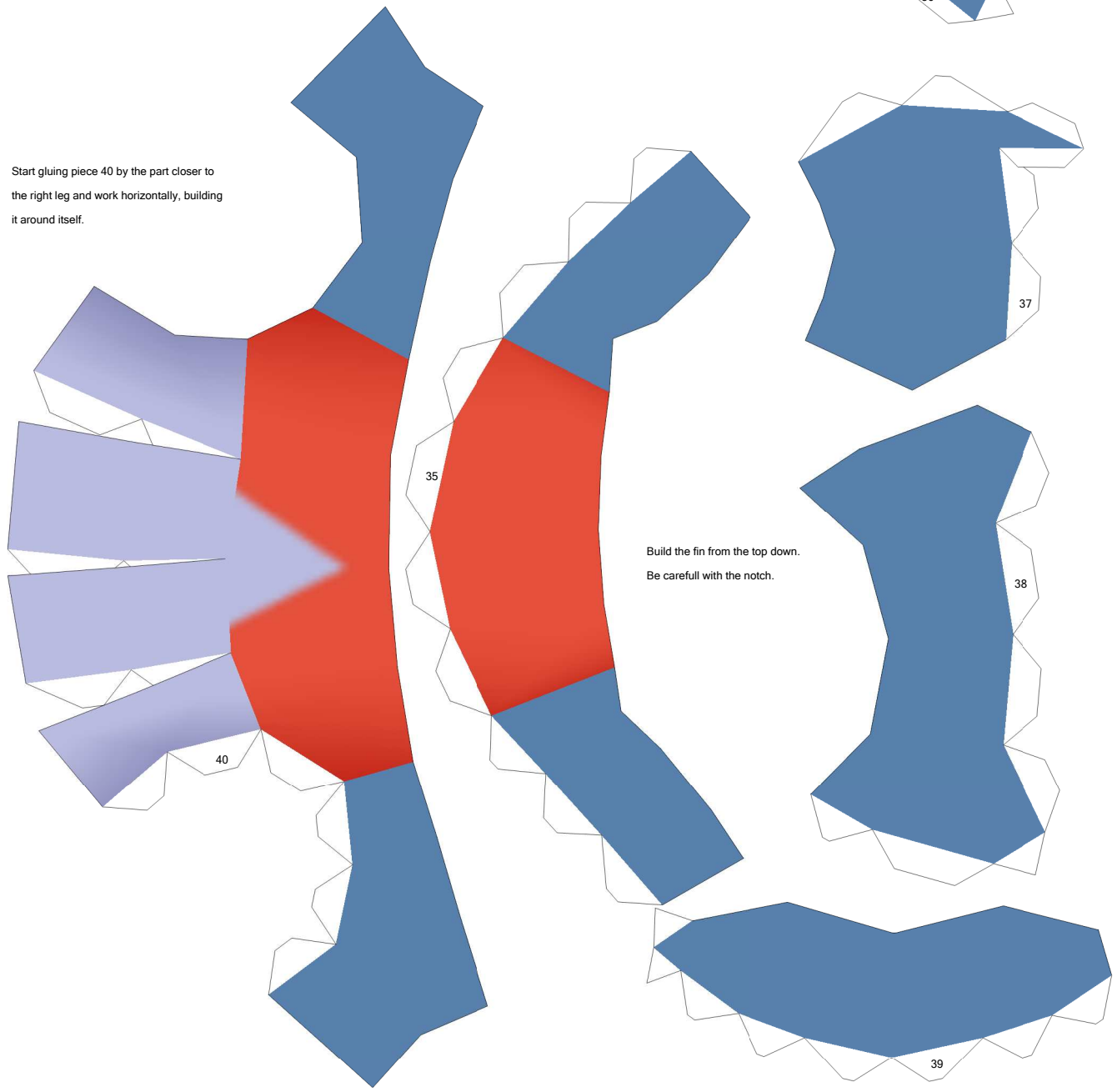


Be carefull with the teeth, they're small but still buildable. Glue them to the mouth before going far.

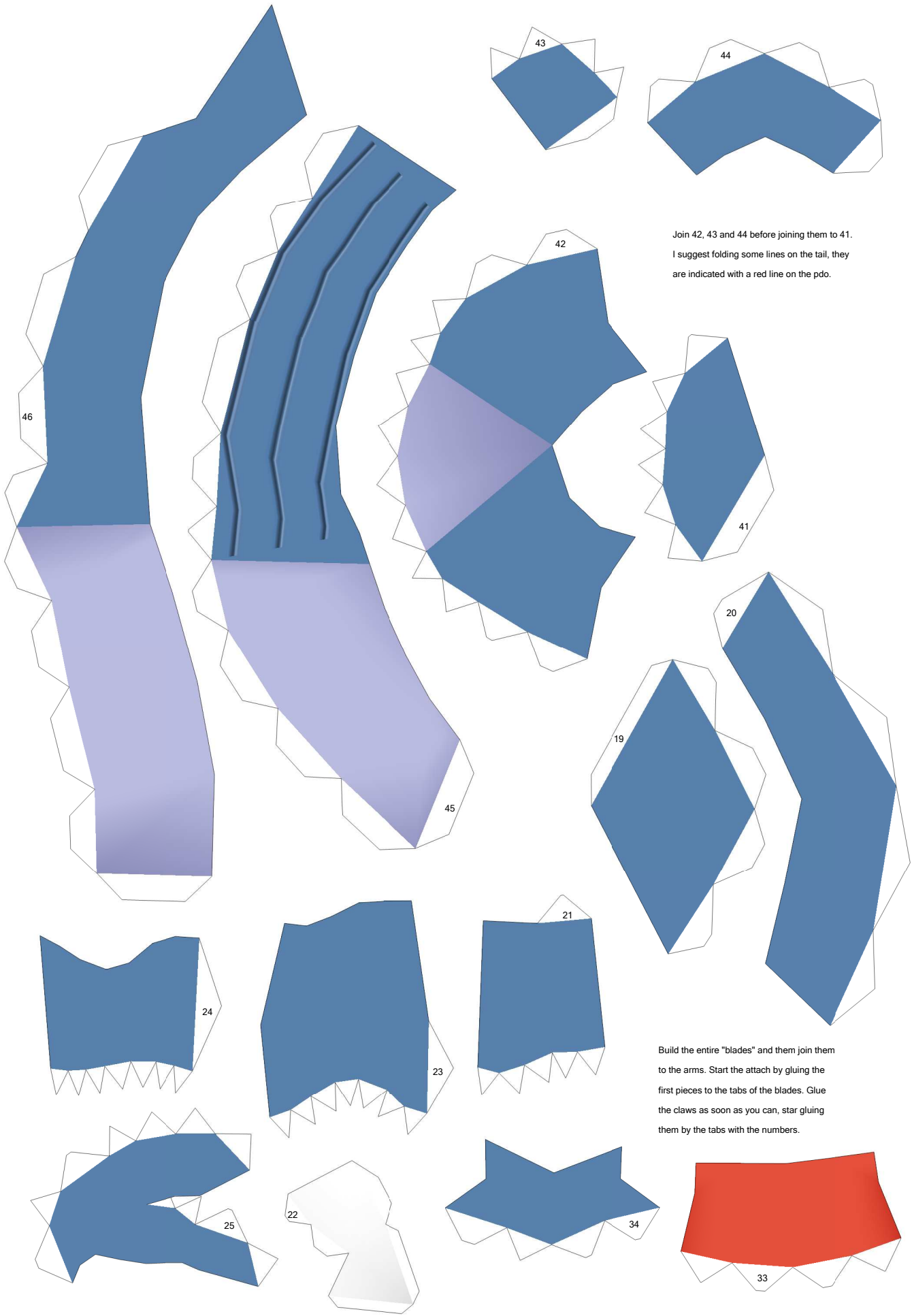




Start gluing piece 40 by the part closer to the right leg and work horizontally, building it around itself.

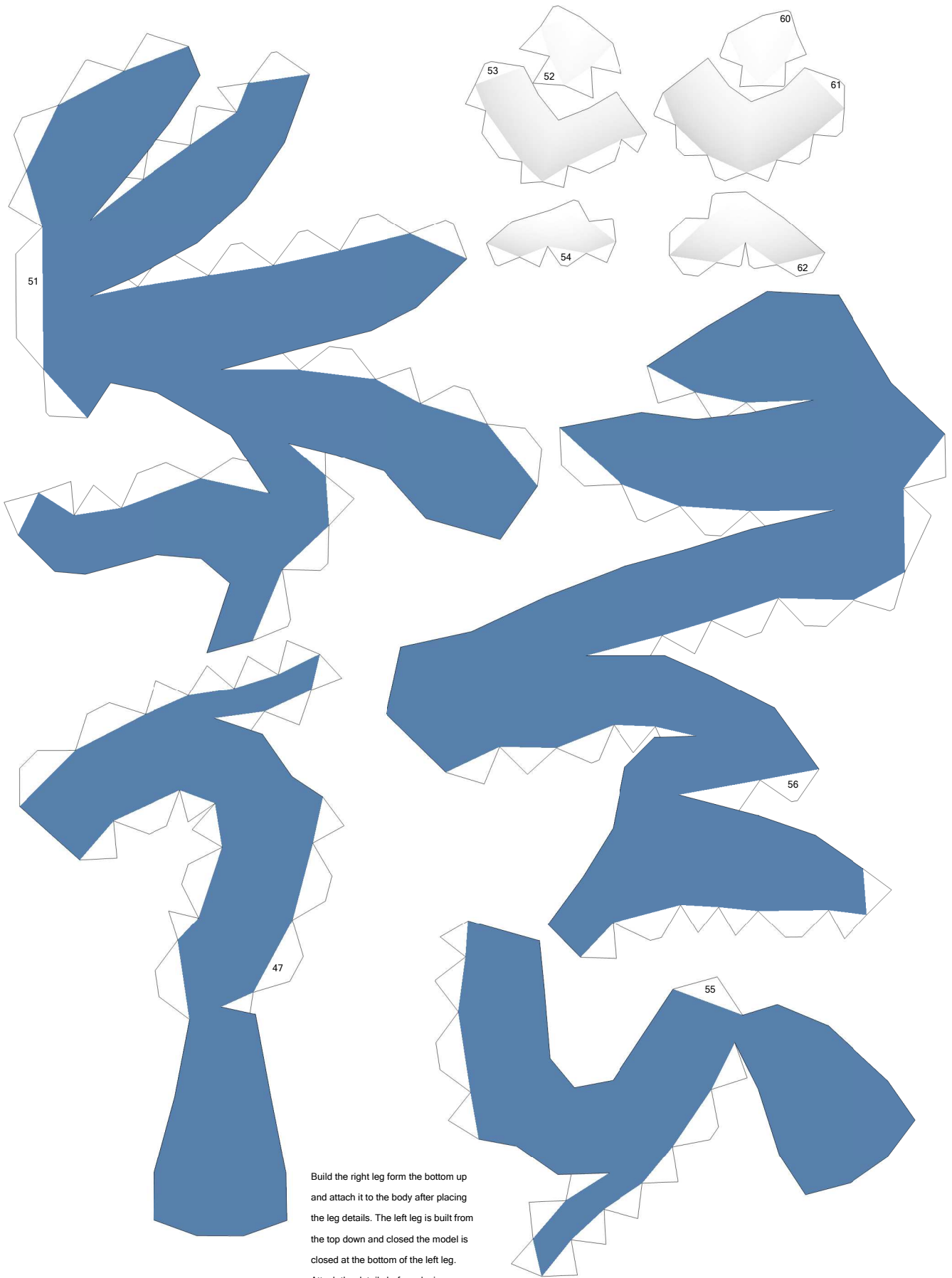


Build the fin from the top down. Be careful with the notch.



Join 42, 43 and 44 before joining them to 41.  
I suggest folding some lines on the tail, they are indicated with a red line on the pdo.

Build the entire "blades" and them join them to the arms. Start the attach by gluing the first pieces to the tabs of the blades. Glue the claws as soon as you can, star gluing them by the tabs with the numbers.



Build the right leg from the bottom up and attach it to the body after placing the leg details. The left leg is built from the top down and closed the model is closed at the bottom of the left leg. Attach the details before closing.