



World of Warcraft
Janeiro Bay's statue

by Barbarian

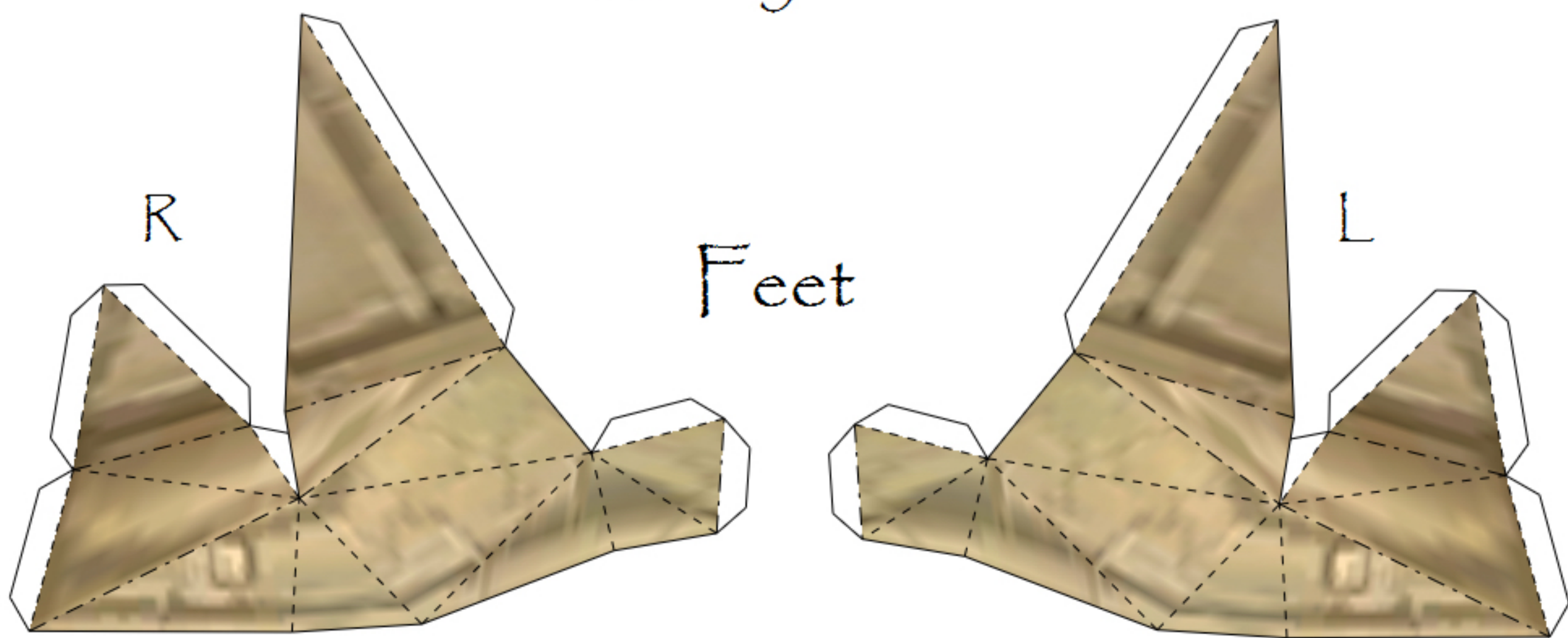
wowpapercraft.blogspot.com

Body - front





Body-back

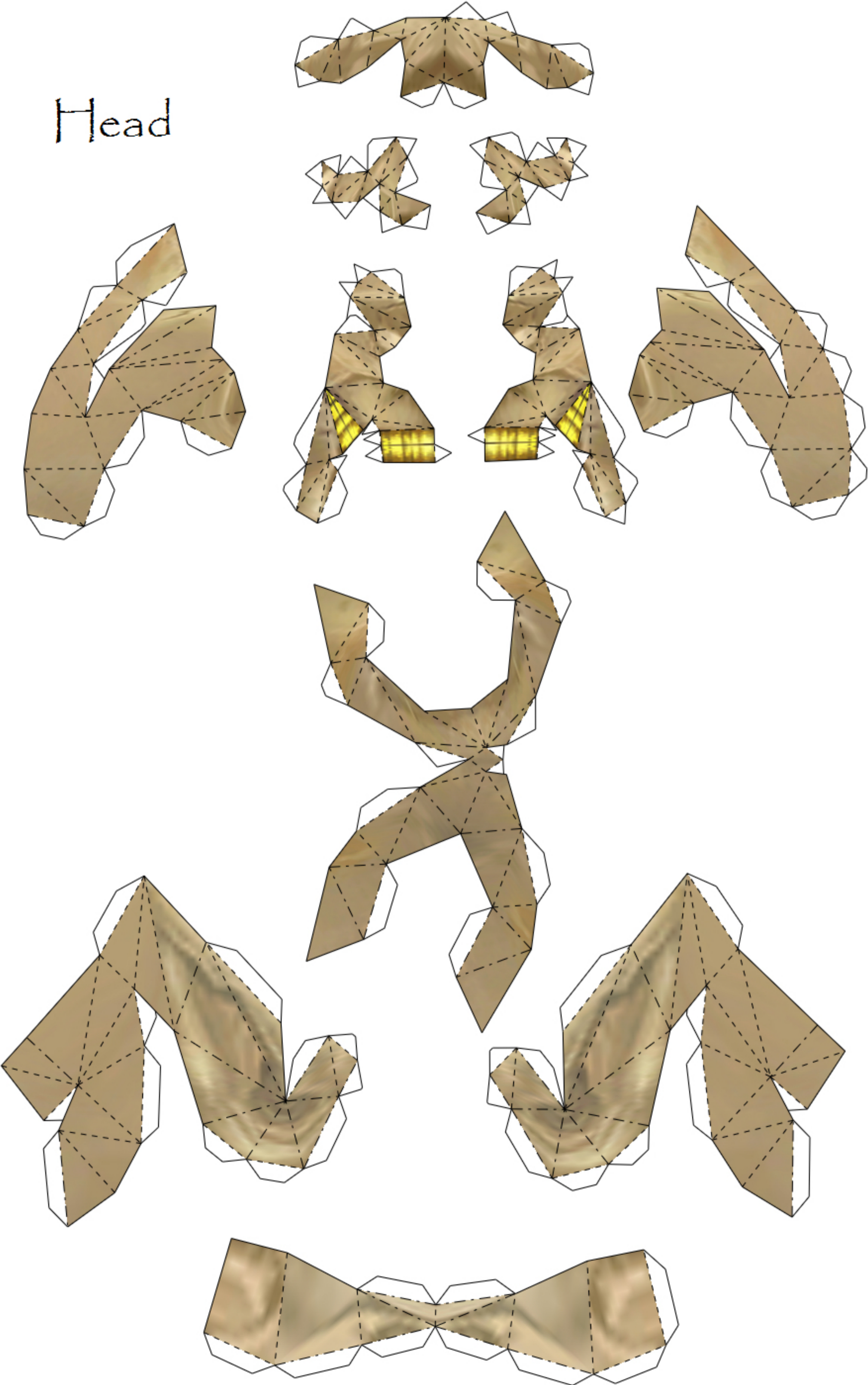


R

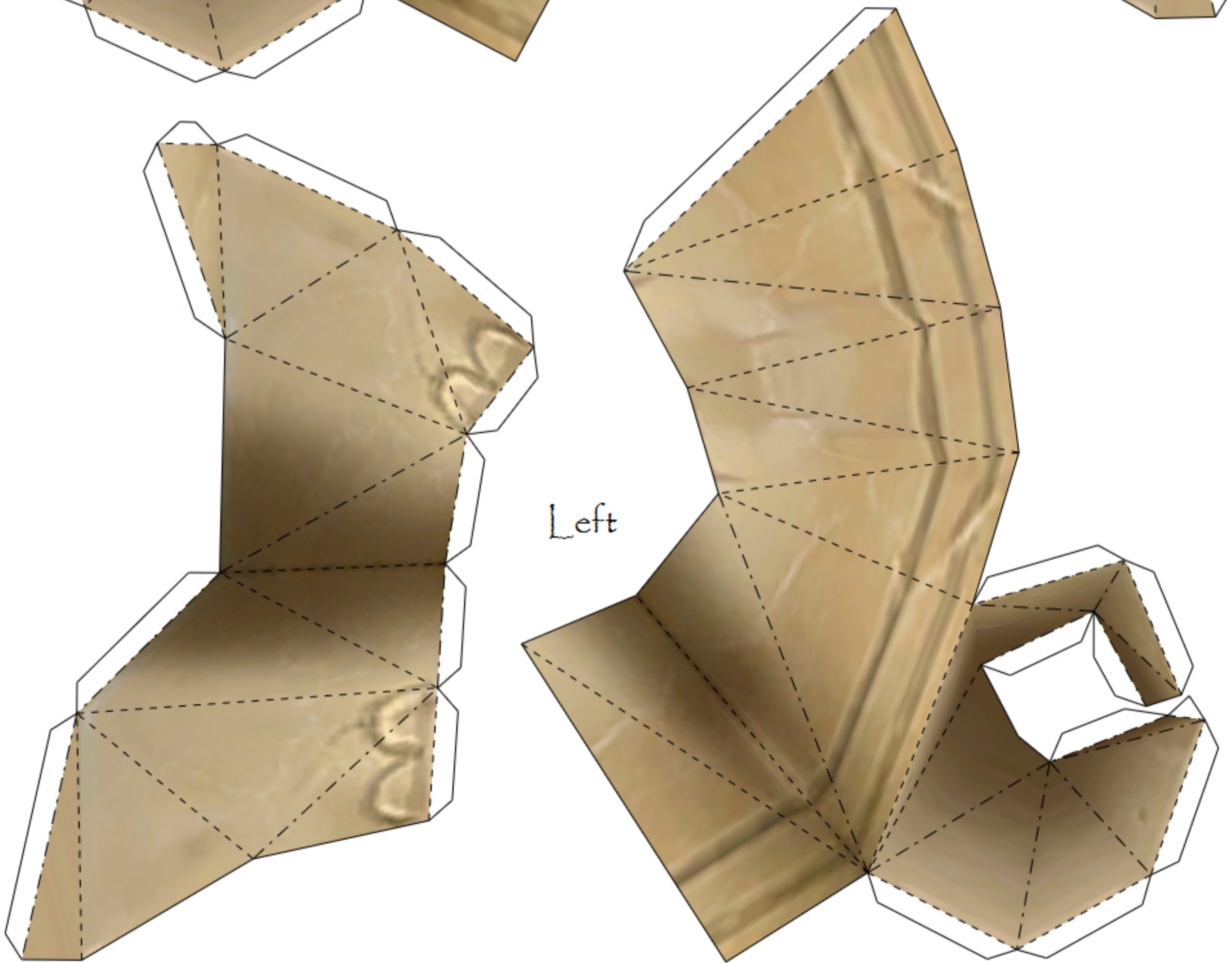
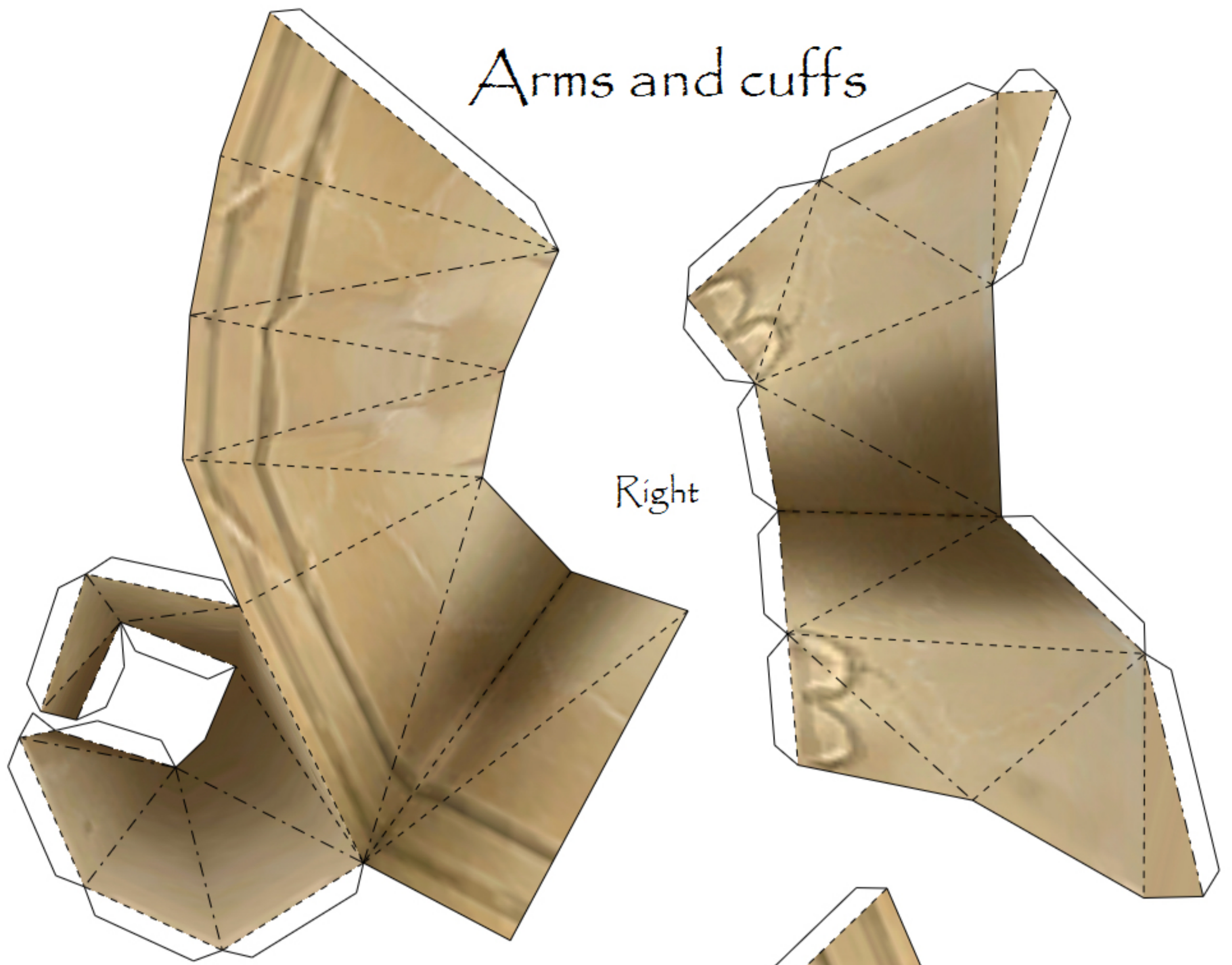
Feet

L

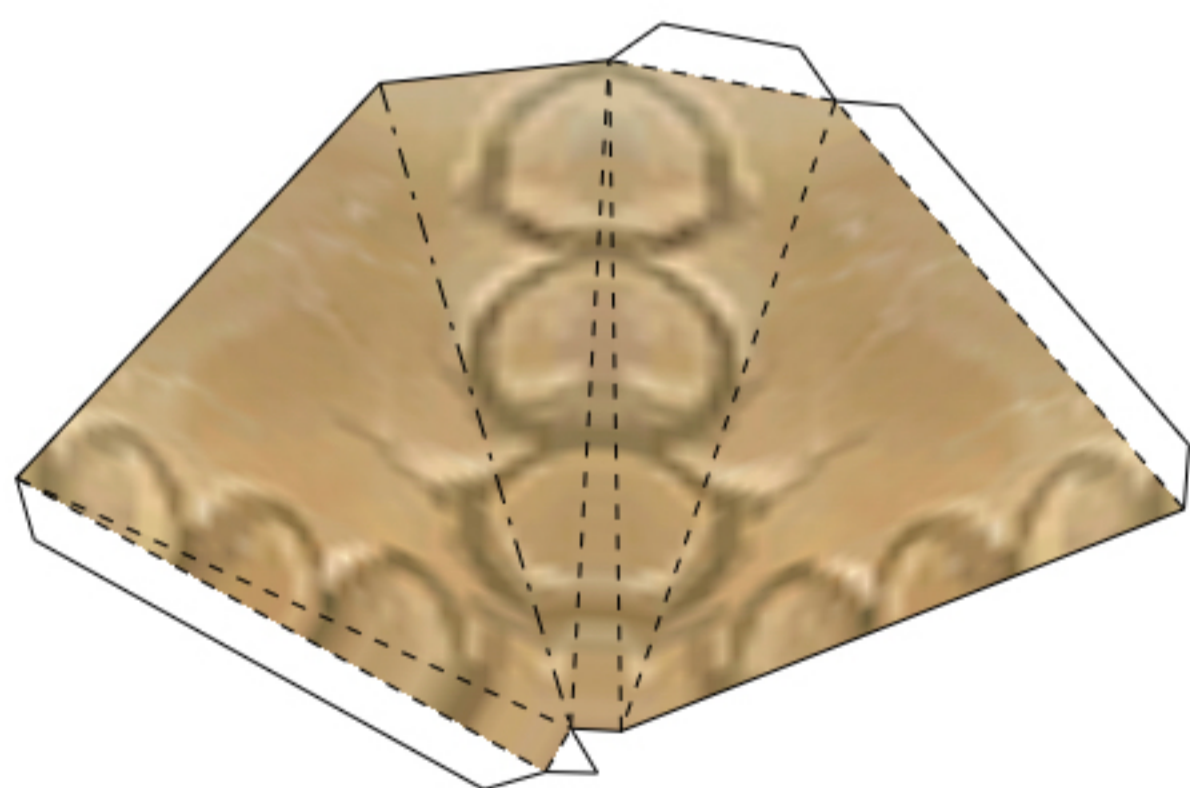
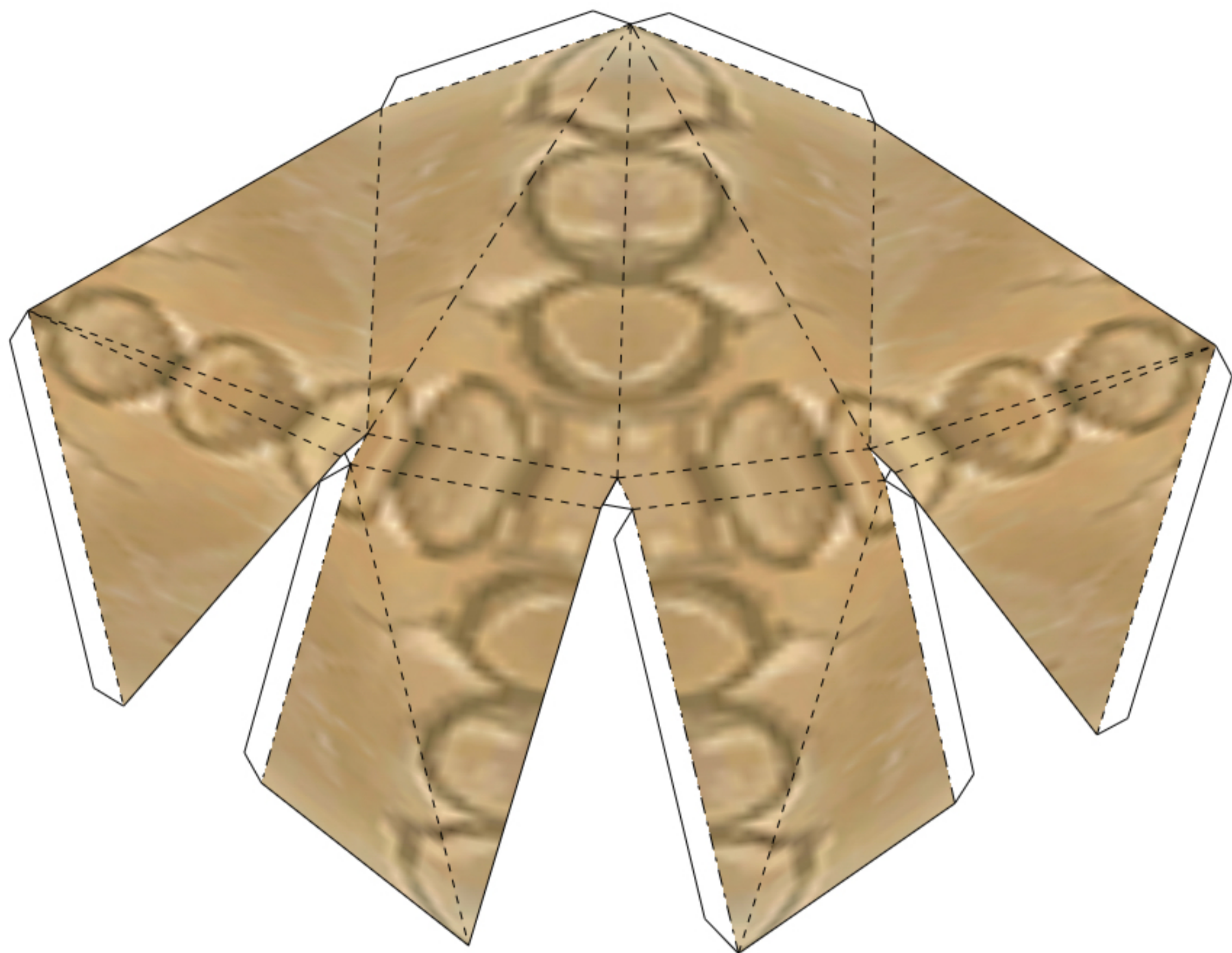
Head



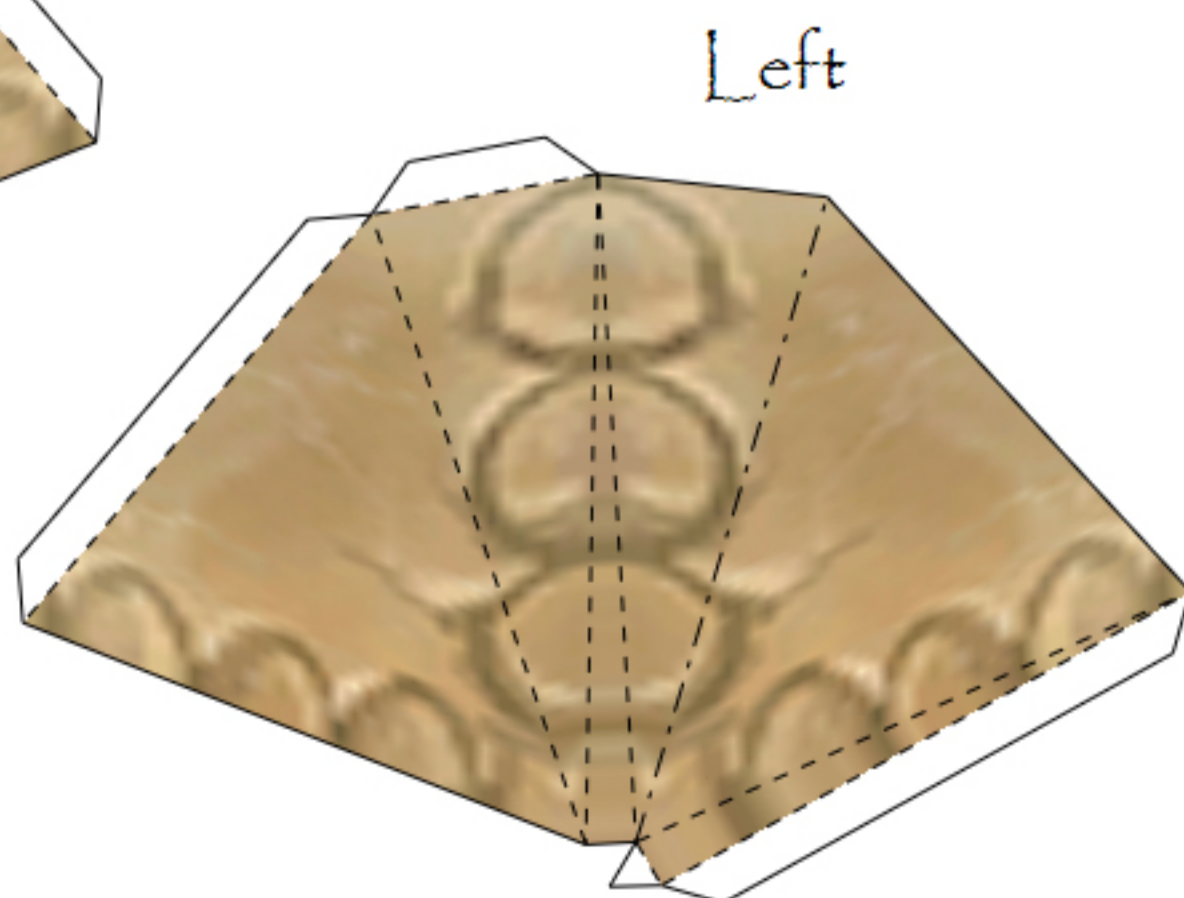
Arms and cuffs



Cloak

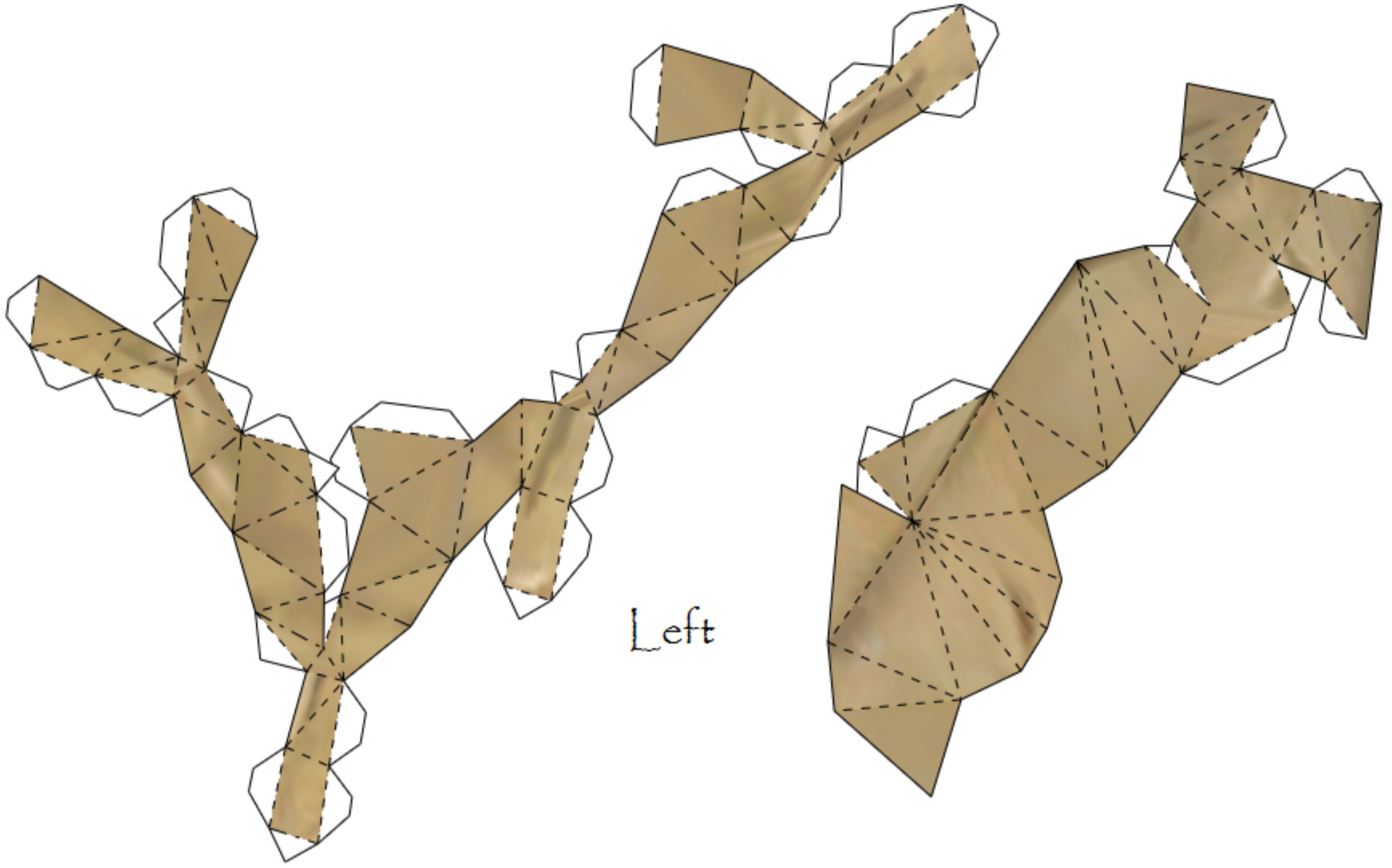


Right

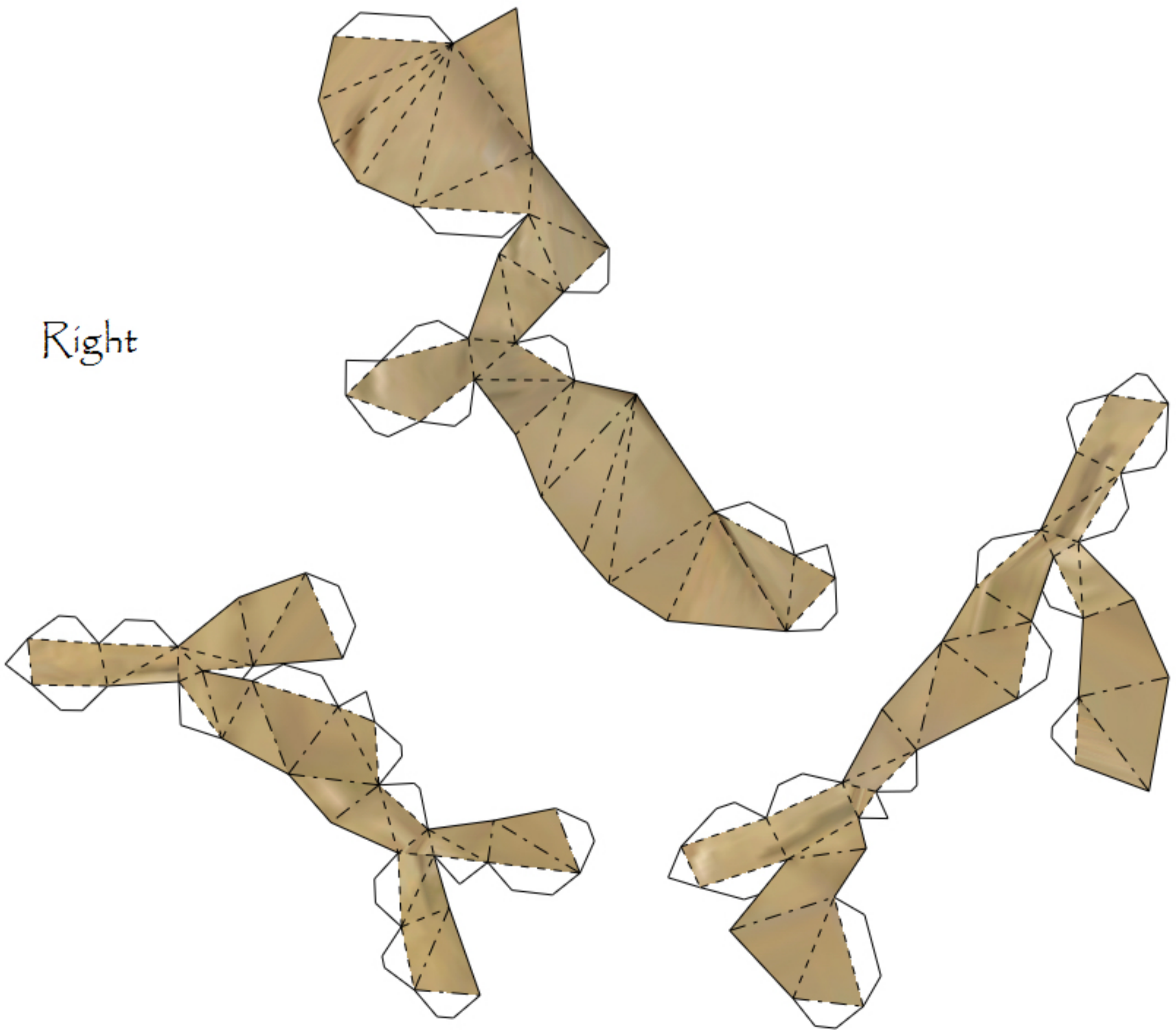


Left

Hands



Right



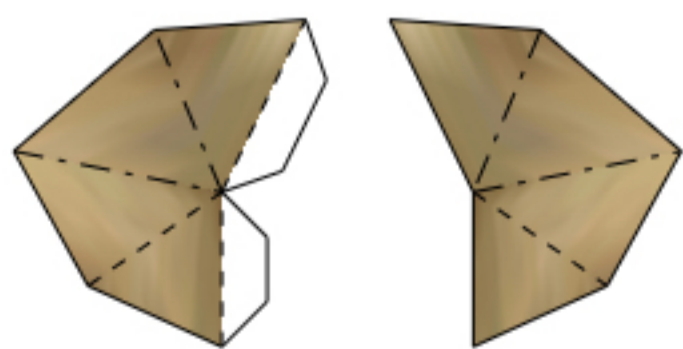
Building tips

The cloak pieces are glued LAST.

They have no flaps to connect to the body, just glue it by its extremities.

Build the entire model first.

Use heavy paper (120g - 180g)



Mouth inside - ignore it.

Just glue the lower lips to the teeth.